

# Performance Highlights



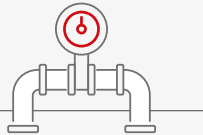
19,083,000

Number of Customers



1,731 MW

Generation Capacity -  
Renewable Energy/  
Energy-from-waste



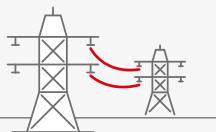
112,300 km

Gas/Oil Pipeline Length



3,968 MW

Generation Capacity -  
Gas-fired



399,100 km

Power Network Length



4,607 MW

Generation Capacity -  
Coal/Oil-fired

## Financials

	<b>2019</b> <b>HK\$</b>	2018 HK\$
<b>Profit attributable to shareholders (million)</b>	<b>7,131</b>	7,636
<b>Earnings per share</b>	<b>3.34</b>	3.58
<b>Dividends per share</b>	<b>2.80</b>	2.80
<b>Total equity (million)</b>	<b>85,492</b>	83,557
<b>Cash on hand (million)</b>	<b>4,876</b>	5,229
<b>Debts (million)</b>	<b>3,319</b>	3,437
<b>Net debt to net total capital ratio</b>	<b>Net Cash</b>	Net Cash
<b>S&amp;P credit rating</b>	<b>A / Stable</b>	A / Stable

### 2019 Profit Contribution by Reportable Business Segment

